

# Q-DOOR-Original

## FRAMEDRAWING

FOR ☐ APPROVAL

☐ KNOWLEDGE

Manual 8-section, outward opening, overlap assembly, sandwich construction, folding doors, type Q-DOOR.

Drawing applies to steel frame for welded installation. (Dimensions in mm.)

To ensure prompt delivery, this drawing must be returned completed and signed to the sales person:

DATE:.....

**I hereby certify that the minimum steel section widths and spacings indicated by MW and MS and the stated values of W and H will be observed:**

Purchasers approval and signature .....

Name in block capitals .....

Company .....

Telephone-no .....

Date .....

TORVERK:s order no:

Item no:

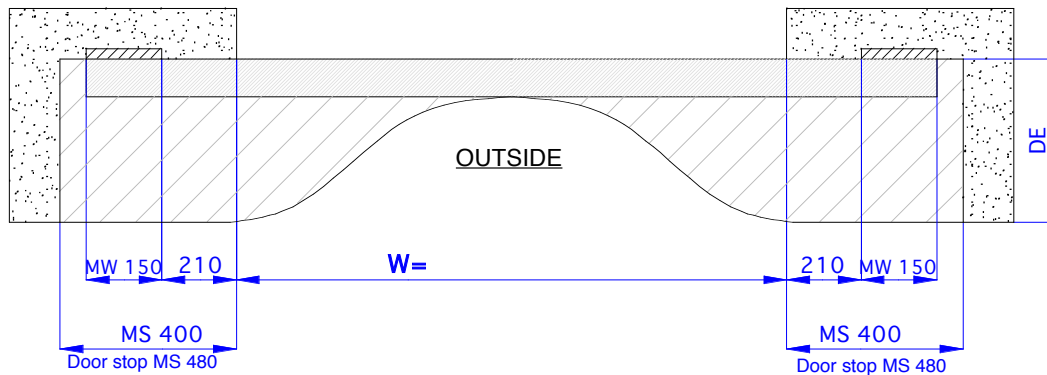
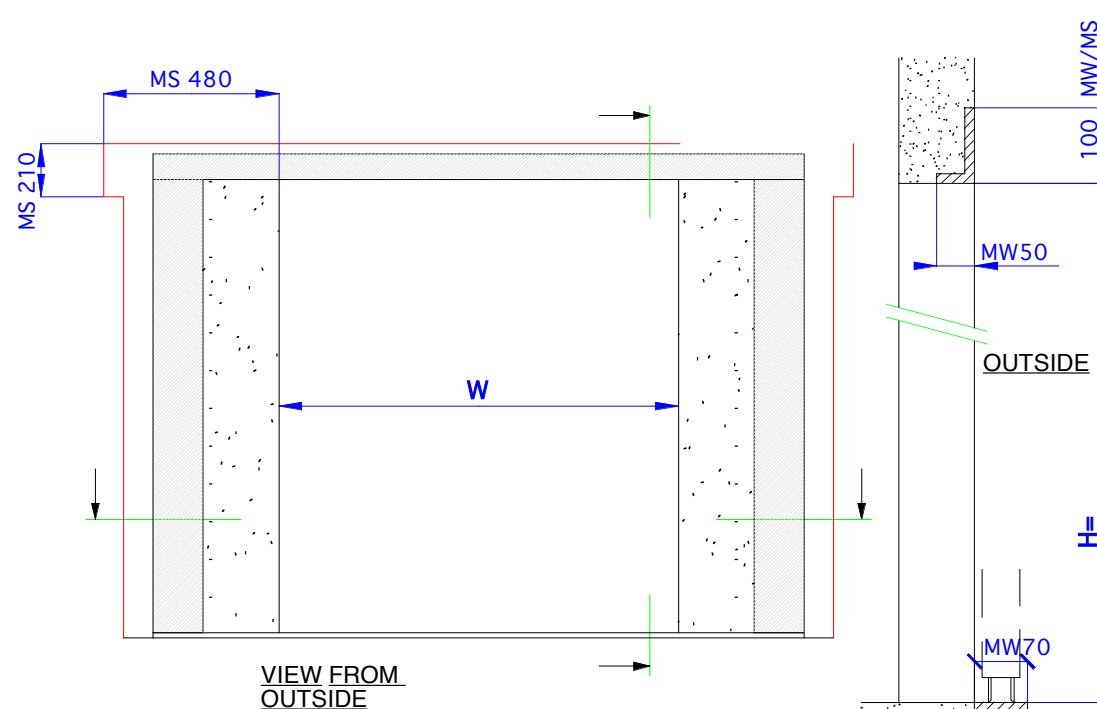
Sellers post date

Sellers sign/code:

(GB) PD QF8OM 270/270 V6.1


Utf: ms 050516. Godk: TE

R4.4.0-2.1.2.2-#

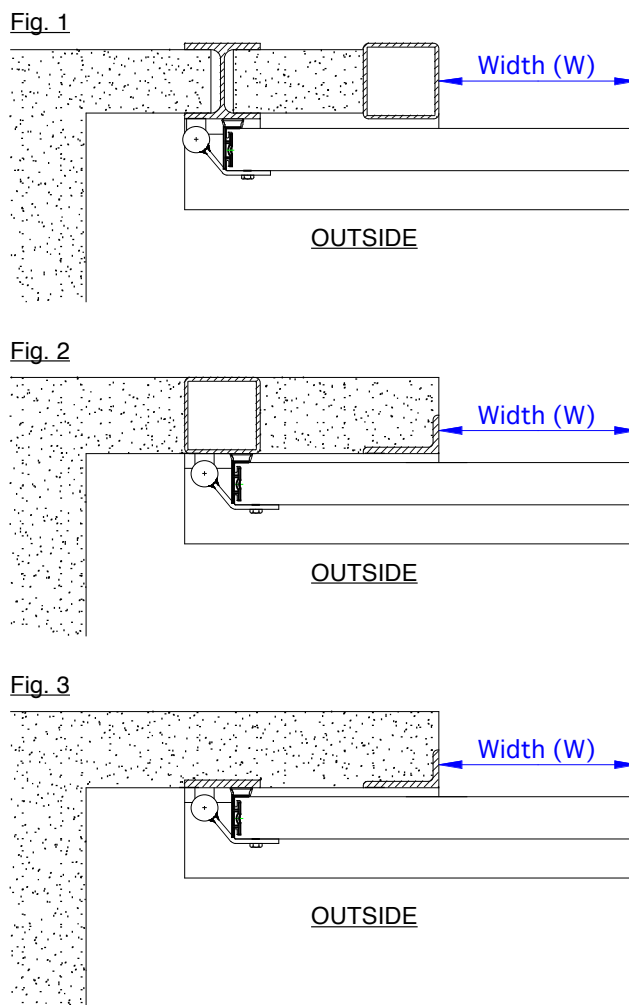


**W** = Open Width  
**H** = Open Height  
**MW** = Minimum steel Width  
**MS** = Minimum Space

**DE**=depth of open door =W/no.of panels+200  
Length of threshold = W+400  
Tolerances on dimensions W and H: +-5mm  
Frame sides must be vert. and top and sill must be horiz.

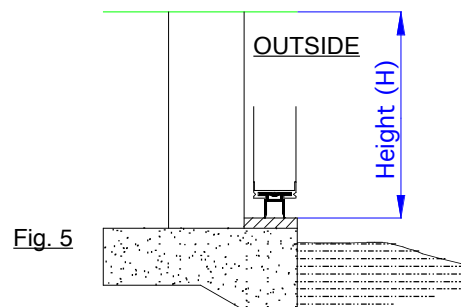
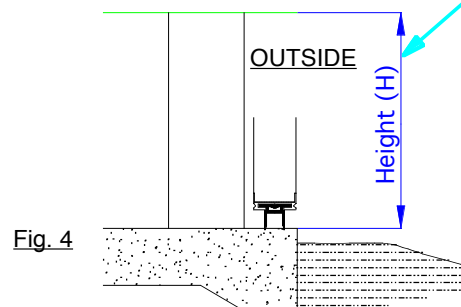
 = Door moving area  
Cont. - see **IMPORTANT INFORMATION** sheet 2

Examples, performance of frame.

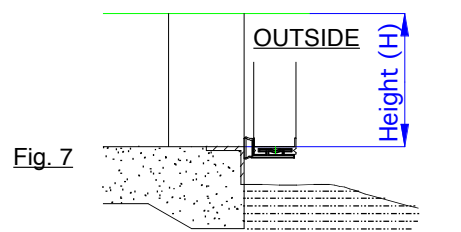
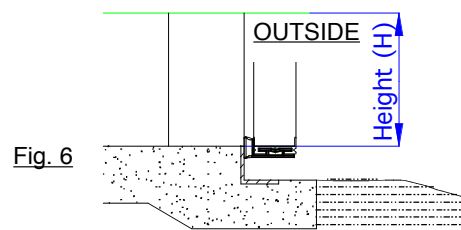


Examples, performance of threshold.

Without a threshold, additional items for bolt installation of guiding fittings and locking fittings is necessary. Also, the floor must be in line with a min gradient acc. fig. 4 below.



Threshold type GK:1



*Q-DOOR Original, Outside installation, manually operated door.*

**Framedrawing for approval / knowledge**

### -GENERAL

This document does not control anything regarding specification of the actual door other than the dimensions (WxH). Other specification than the dimensions complies to the order confirmation.

**The purchasers approval** must be sent to Torverk in form of a signed frame drawing (including dimensions) before production can start. This is a routine to ensure dimensions, required space and steel work etc.

### Frame, demands

Other than the space and steel work that is stated on the frame drawing, the purchaser shall take in consideration the wall construction, wind loads, door weight etc.

**Frame of angled steel for installation of hinges, rails etc. should have a thickness of at least 8 mm. For rectangular steel tubes a thickness of at least 4 mm should be applied.**

### Alternatives

The frame performance may vary, but if there is any uncertainty, Torverk should be consulted.

(SE) PD QF/P 7-12OM-Blad 2 v6.1

Utf: TBO 020405. Godk: TE  
Translation by ms 091002.

R4.4.0-2.1.2.2-#