

# Q-DOOR-Original

## FRAMEDRAWING

FOR ☐ APPROVAL

☐ KNOWLEDGE

*Electrically operated 4-section, outward opening overlap assembly, sandwich construction, folding doors, type Q-DOOR. (2 pcs sidemounted motors)*

*Drawing applies to steel frame for welded installation. (Dimensions in mm.)*

To ensure prompt delivery, this drawing must be returned completed and signed to the sales person:

DATE:.....

**I hereby certify that the minimum steel section widths and spacings indicated by MW and MS and the stated values of W and H will be observed:**

Purchasers approval and signature

Name in block capitals

Company

Telephone-no

Date

TORVERK:s order no:

Item no:

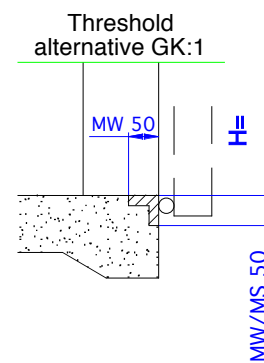
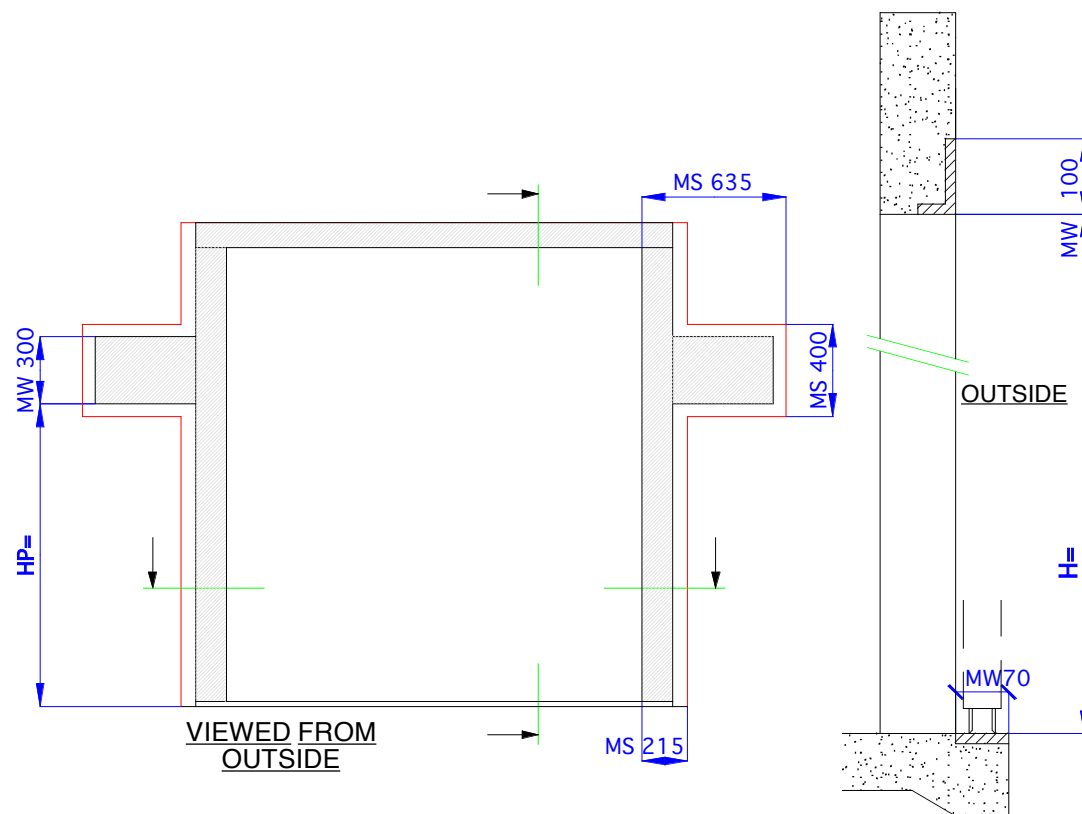
Sellers post date

Sellers sign/code:

**(GB) PD QF4OE22-SM** V6.1

Utf: TBO 020312. Godk: TE

R4.4.0-2.1.2.2-#



**W** = Open Width  
**H** = Open Height  
**MW** = Minimum steel Width  
**MS** = Minimum Space

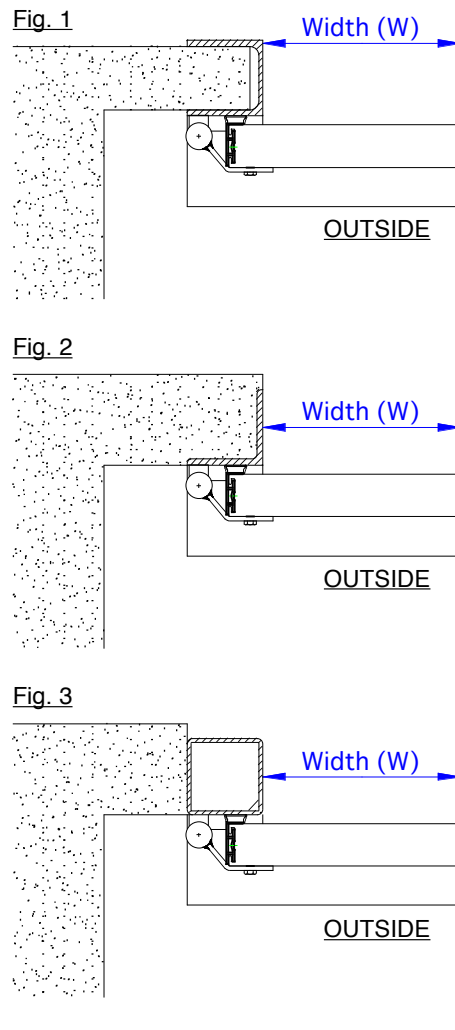
**DE**=depth of open door =  $W/4+200$   
Length of threshold =  $W+240$   
Tolerances on dimensions W and H:  $\pm 5\text{mm}$   
Frame sides must be vert. and top and sill must be horiz.



= Door moving area

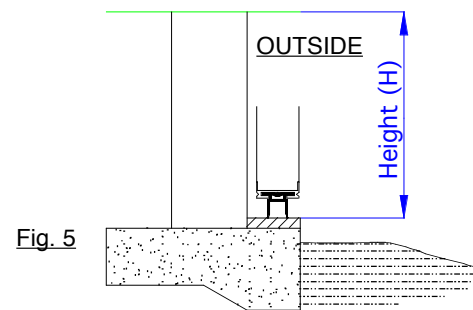
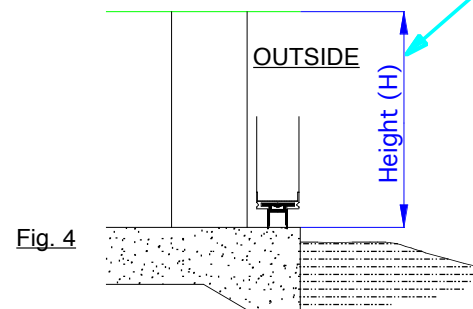
Cont. - see **IMPORTANT INFORMATION** sheet 2

Examples, performance of frame.

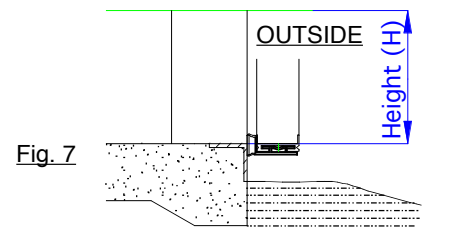
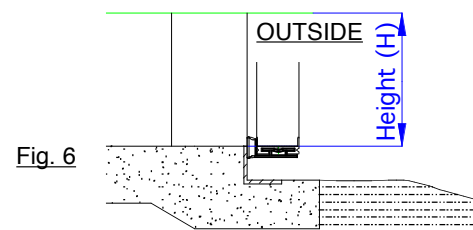


Examples, performance of threshold.

Without a threshold, additional items for bolt installation of guiding fittings and locking fittings is necessary. Also, the floor must be in line with a min gradient acc. fig. 4 below.



Threshold type GK:1



*Q-DOOR Original, Outside installation, manually and electricly operated door.*

***Framedrawing for approval / knowledge***

### **-GENERAL**

This document does not control anything regarding specification of the actual door other than the dimensions (WxH). Other specification than the dimensions complies to the order confirmation.

**The purchasers approval** must be sent to Torverk in form of a signed frame drawing (including dimensions) before production can start. This is a routine to ensure dimensions, required space and steel work etc.

### **Frame, demands**

Other than the space and steel work that is stated on the frame drawing, the purchaser shall take in consideration the wall construction, wind loads, door weight etc.

**Frame of angled steel for installation of hinges, rails etc. should have a thickness of at least 8 mm. For rectangular steel tubes a thickness of at least 4 mm should be applied.**

### **Alternatives**

The frame performance may vary, but if there is any uncertainty, Torverk should be consulted.

(SE) PD QF/P 2-6OM/E-Blad 2 v6.1

Utf: TBO 020405. Godk: TE  
Translation by ms 091002.

R4.4.0-2.1.2.2-#