

Q-DOOR-Original

FRAMEDRAWING

FOR ☐ APPROVAL

☐ KNOWLEDGE

Electrically operated, 2-section, outward opening, overlap assembly, sandwich construction, folding doors, type Q-DOOR.

Drawing applies to steel frame for welded installation. (Dimensions in mm.)

To ensure prompt delivery, this drawing must be returned completed and signed to the sales person:

DATE:.....

I hereby certify that the minimum steel section widths and spacings indicated by MW and MS and the stated values of W and H will be observed:

Purchasers approval and signature

Name in block capitals

Company

Telephone-no

Date

TORVERK:s order no:

Item no:

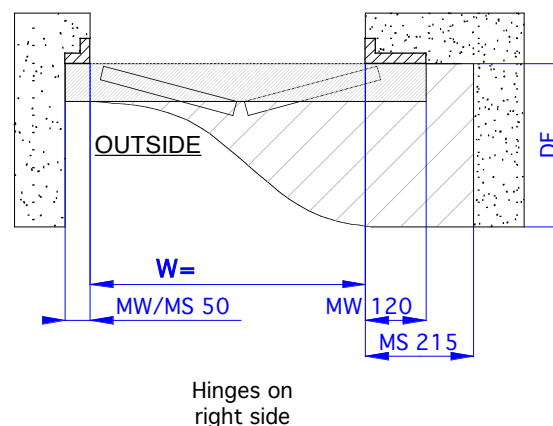
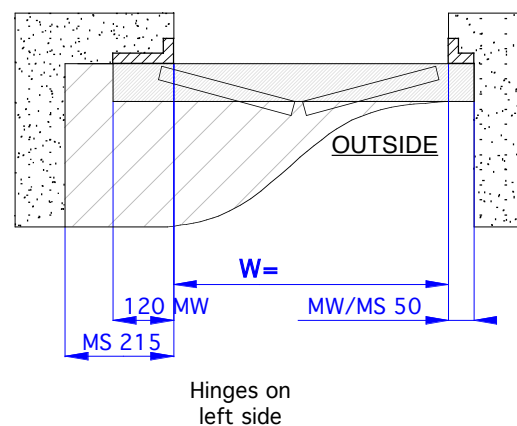
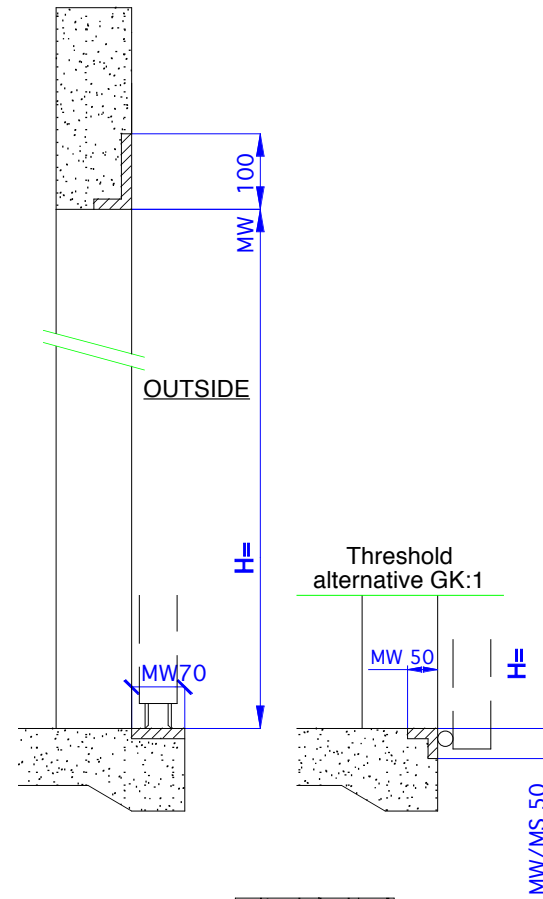
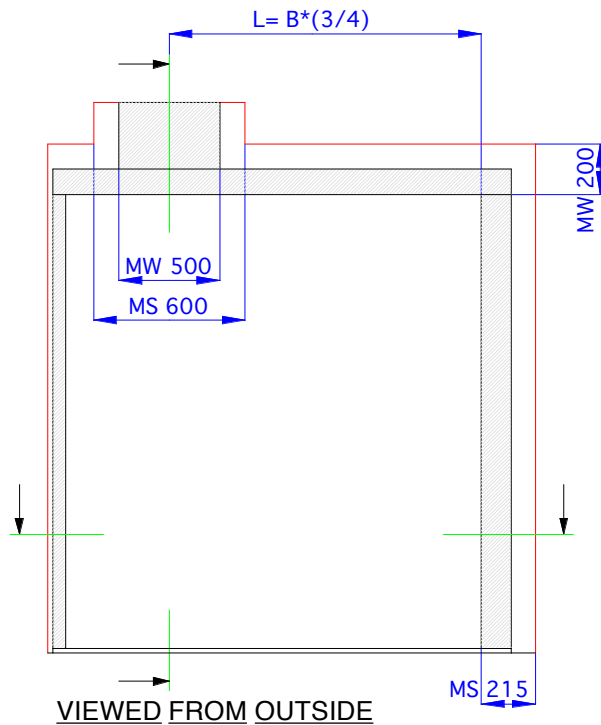
Sellers post date

Sellers sign/code:

(GB) PD QF2OE11-MW V6.1


Utf: TBO 051202. Godk: TE

R4.4.0-2.1.2.2-#

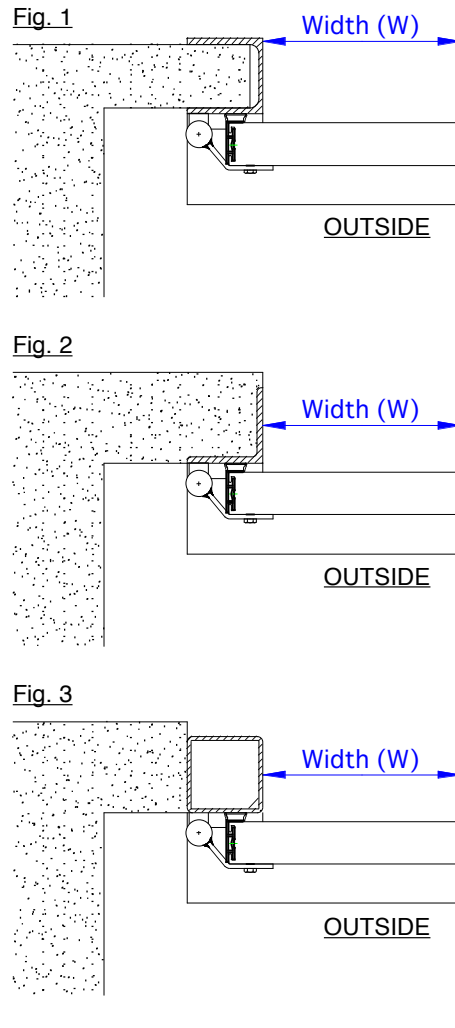


W = Open Width
H = Open Height
MW = Minimum steel Width
MS = Minimum Space

DE=depth of open door = $W/2+150$
Length of threshold = $W+150$
Tolerances on dimensions W and H: $\pm 5\text{mm}$
Frame sides must be vert. and top and sill must be horiz.

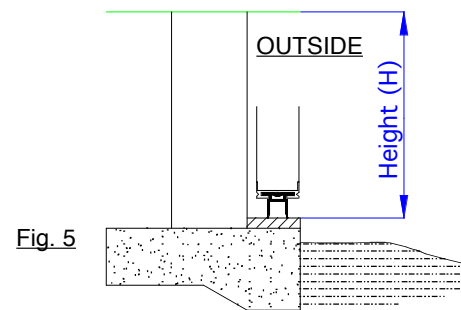
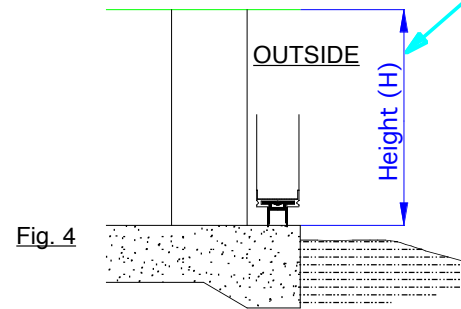
 = Door moving area
Cont. - see **IMPORTANT INFORMATION** sheet 2

Examples, performance of frame.

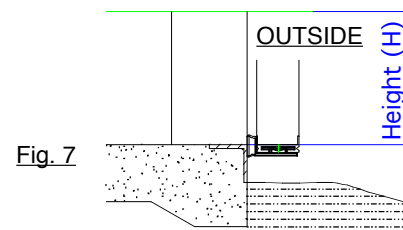
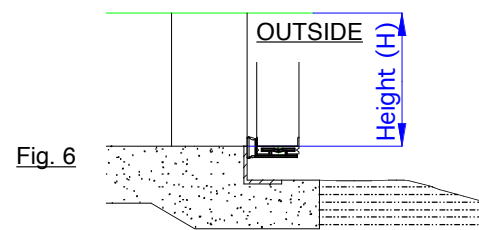


Examples, performance of threshold.

Without a threshold, additional items for bolt installation of guiding fittings and locking fittings is necessary. Also, the floor must be in line with a min gradient acc. fig. 4 below.



Threshold type GK:1



Q-DOOR Original, Outside installation, manually and electricly operated door.

Framedrawing for approval / knowledge

-GENERAL

This document does not control anything regarding specification of the actual door other than the dimensions (WxH). Other specification than the dimensions complies to the order confirmation.

The purchasers approval must be sent to Torverk in form of a signed frame drawing (including dimensions) before production can start. This is a routine to ensure dimensions, required space and steel work etc.

Frame, demands

Other than the space and steel work that is stated on the frame drawing, the purchaser shall take in consideration the wall construction, wind loads, door weight etc.

Frame of angled steel for installation of hinges, rails etc. should have a thickness of at least 8 mm. For rectangular steel tubes a thickness of at least 4 mm should be applied.

Alternatives

The frame performance may vary, but if there is any uncertainty, Torverk should be consulted.

(SE) PD QF/P 2-6OM/E-Blad 2 v6.1

Utf: TBO 020405. Godk: TE
Translation by ms 091002.

R4.4.0-2.1.2.2-#